

Hawthorne Fine Art

Fifth Anniversary





JULIE HART BEERS (1835–1913)

Boating Party on the Hudson River

Oil on canvas, 9 x 14 inches

Signed lower right



T. WORTHINGTON WHITTREDGE (1820–1910)

Trout Fisherman in a Mountain Stream, 1861

Oil on canvas, 28 x 21 inches

Signed and dated 1861, lower left





MARTIN JOHNSON HEADE (1819–1904)

Red Rose, 1878

Oil on canvas, 15 x 10.25 inches
Signed and dated 1878, lower right



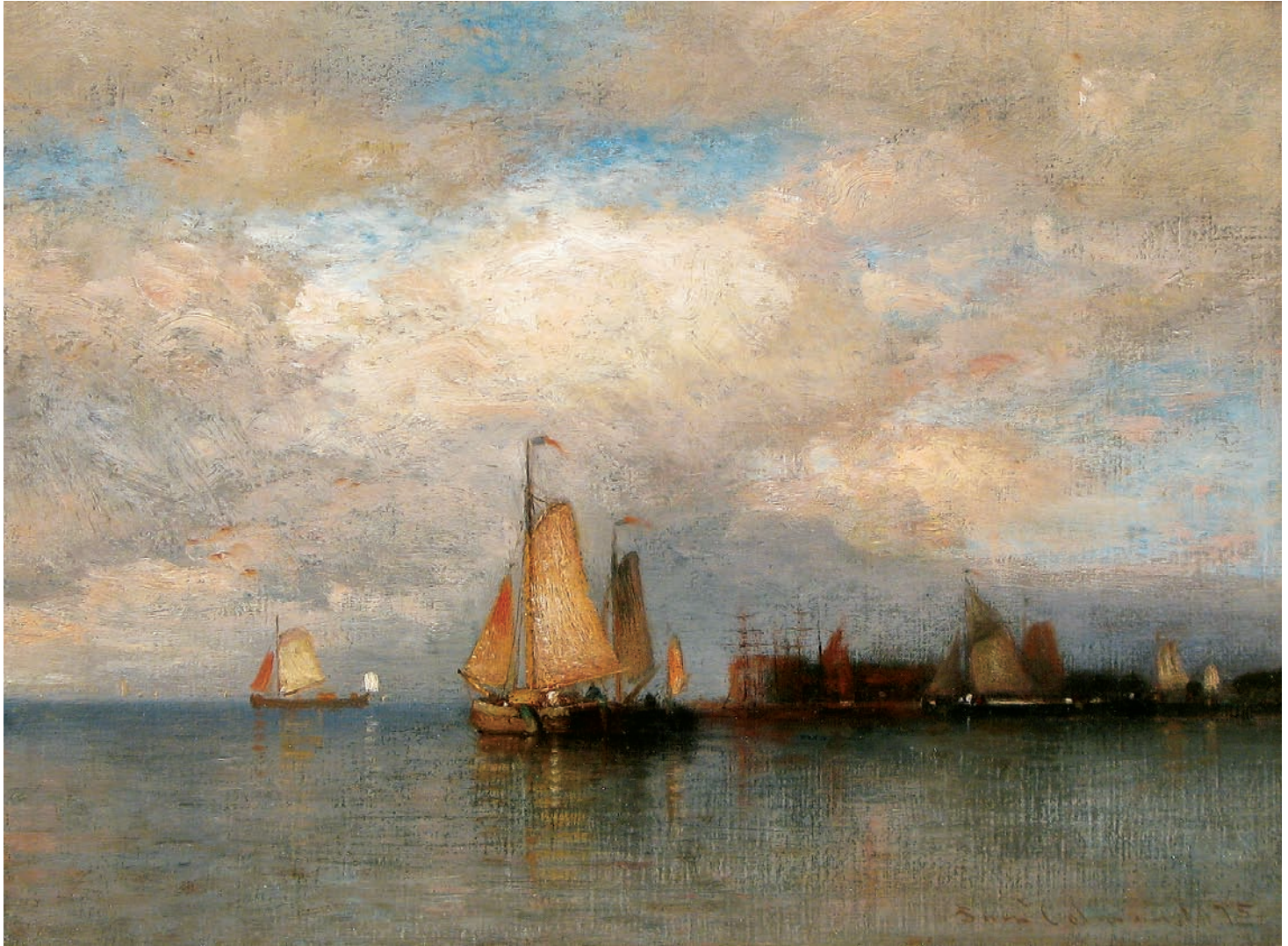


THOMAS MORAN (1837–1926)

Summer Squall, 1889

Oil on canvas, 24 x 35.5 inches

Signed and dated 1889, lower right



SAMUEL COLMAN (1832–1920)

Governors Island, New York Harbor, 1875

Oil on canvas, 11.5 x 14.5 inches

Signed lower right



SANFORD ROBINSON GIFFORD (1823–1880)

Mount Merino, 1861

Oil on canvas, 11 x 22 inches

Signed and dated 1861, lower left





WILLIAM LAMB PICKNELL (1853–1897)

Sunlit Landscape

Oil on canvas, 16 x 22 inches



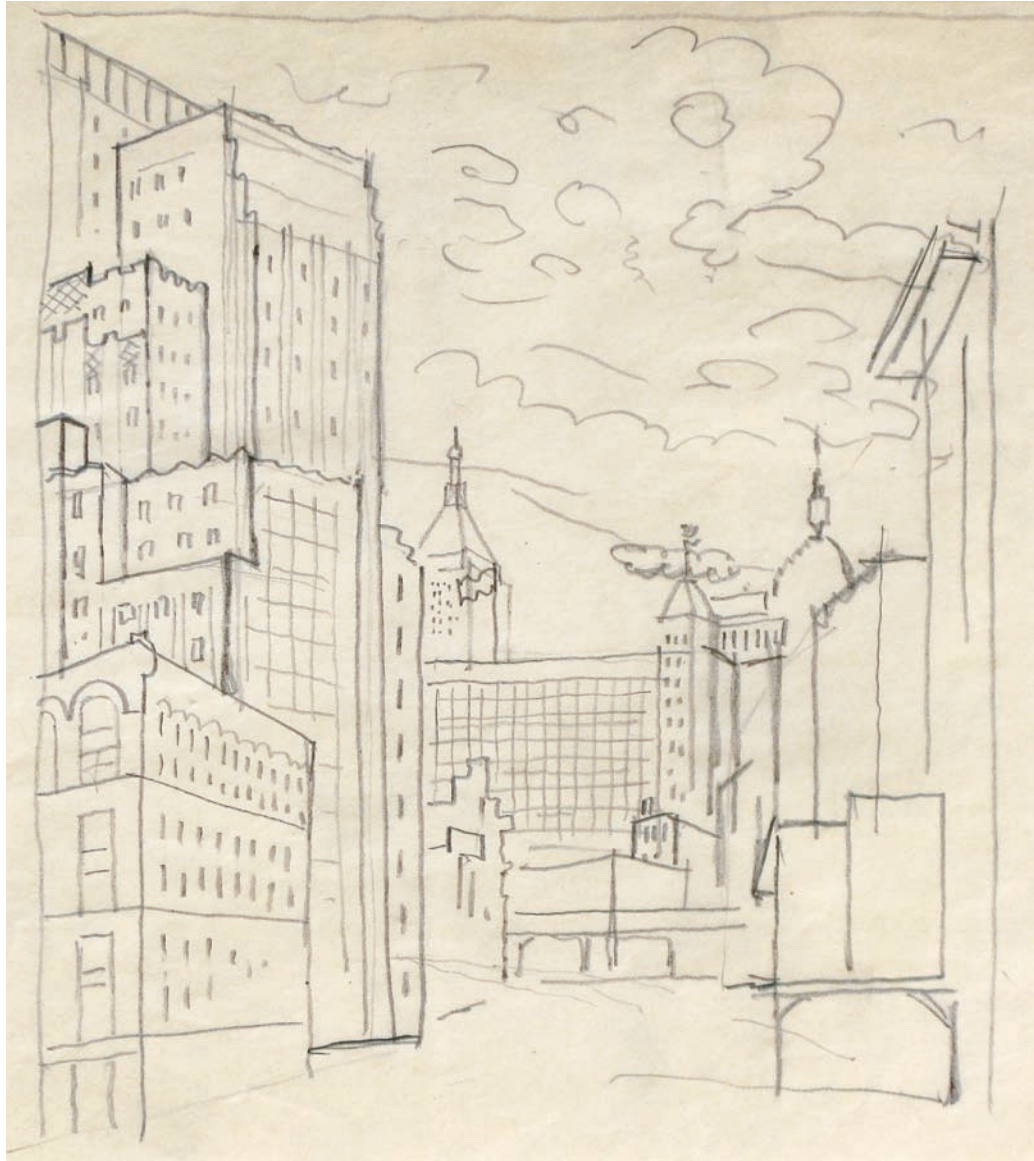


WALTER LAUNT PALMER (1854–1932)

The First Snow, 1898

Oil on canvas, 16 x 24 inches

Signed lower right



STUART DAVIS (1894-1964)

Lower Manhattan

Pencil on paper, 9.5 x 9 inches

Estate of the artist



Antonia J. Pocock
RESEARCH ASSISTANT

Jennifer C. Krieger
MANAGING PARTNER

Ashley M. Callman
ASSISTANT DIRECTOR

As we come upon the anniversary of our fifth year in business, I cannot help but to reflect and fully celebrate our experiences. I think of the adventures we have enjoyed in seeking out paintings from all over the country, the delight in uncovering hidden works by artists we love and the incredible people we have met in the process. I am truly grateful for the opportunity that we have to discover paintings of great beauty and to find them the right home. The relationships we cultivate and the dialogues we strike are what keep us continually motivated and inspired. We pride ourselves on the acuteness of our research and the ability to source masterworks out of seemingly thin air. Please let us know how we can help you as collectors find the specific treasures of which you continually dream. We will embrace that challenge!

—Jennifer C. Krieger



Hawthorne Fine Art

74 East 79th Street, Suite 3A-B * New York, New York 10075 * 212.731.0550

info@hawthornefineart.com * www.hawthornefineart.com * Tues–Sat 10am–6pm & by appointment

FRONTCOVER: Sanford Robinson Gifford (1823–1880), *Mount Merino* (detail), 1861, Oil on canvas, 11 x 22 inches. Signed and dated 1861, lower left

BACKCOVER: Jervis McEntee (1828–1891), *Christmas in the Catskills*, 1867, Oil on canvas, 12.5 x 10.25 inches. Signed and dated 1867, lower right

CATALOG DESIGN: Rita Lascaro



Hawthorne Fine Art

74 East 79th Street, Suite 3A-B * New York, New York 10075 * 212.731.0550

info@hawthornefineart.com * www.hawthornefineart.com * Tues-Sat 10am-6pm & by appointment