A detailed oil painting of a man with voluminous white hair, looking slightly to the right. He is wearing a dark blue coat with a white cravat and a white flower pinned to his lapel. The background is a dark, textured green.

TRIUMPHANT LIVES:  
AMERICAN  
WOMEN ARTISTS  
(1795-1950)



HAWTHORNE  
Fine Art



## Welcome



### BENONI IRWIN (1840–1896)

*The Artist*, Oil on canvas, 24 x 20 inches  
Signed and dated 1880, lower left

WOMEN ARTISTS IN THE NINETEENTH CENTURY faced both tangible and intangible obstacles to their careers. The majority of these obstacles were cultural, as women were discouraged from participating in the commercial markets and primarily restricted to the realm of the home. As historian Kathleen Waters Sander writes, this meant that gentlewomen could be stricken with poverty at any moment due to the loss of the family business or breadwinner.<sup>1</sup> Unsurprisingly, many women artists of the nineteenth century were both productive and professional in seeking work. They took up the paintbrush and fought for creative opportunities, much like their successors would fight for Women's Suffrage at the turn of the century. As historian Laura Prieto writes, the dominant "stereotypes of the dabbling lady amateur and the genteel true woman helped to explain why women might want (and benefit from) instruction in fine art, even at more professionally oriented institutions."<sup>2</sup> The right to pursue a career as an artist was symbolic to these women of their creative desires, their individuality, and their independence.<sup>3</sup>



Please contact us for inquiries on the works presented herein by email: [info@hawthornefineart.com](mailto:info@hawthornefineart.com) or by phone: 212.731.0550 and read the biographies of their makers on our website: [www.hawthornefineart.com](http://www.hawthornefineart.com).

Sincerely,

JENNIFER C. KRIEGER, *Managing Partner*

ELIZABETH FRASCO, *Gallery Associate*

MEGAN BONGIOVANNI, *Research Associate*

HAWTHORNE FINE ART, LLC

12 East 86th Street, Suite 1425, New York, NY 10028 (BY APPOINTMENT)

1. Sander, Kathleen Waters. *The Business of Charity: The Woman's Exchange Movement, 1832–1900*. Urbana: University of Illinois Press, 1998, ix, 37.

2. Prieto, Laura R. *At Home in the Studio: The Professionalization of Women Artists in America* (Cambridge: Harvard University, 2001), 25.

3. This statement was written by Elizabeth Frasco, MA





FELICIE WALDO HOWELL

15th St. N.Y.C. 1915



**MARTHA BARE**  
(1864–1940)

*Still Life with Roses*, 1891

Oil on canvas  
29 x 20½ inches  
Signed lower right



**ADELE FRANCES BEDELL**  
(1861–1957)

*Landscape with Tree* (RECTO)

Oil on panel  
3⅞ x 6¼ inches



**ADELE FRANCES BEDELL**  
(1861–1957)

*Landscape with Tree* (VERSO)

Oil on panel  
3⅞ x 6¼ inches





**ADELE FRANCES BEDELL**  
(1861–1957)

*Mountain Landscape* (ABOVE, RECTO)

Oil on panel  
3<sup>7</sup>/<sub>16</sub> x 6<sup>1</sup>/<sub>4</sub> inches

**ADELE FRANCES BEDELL**  
(1861–1957)

*World's Columbia Exposition* (BELOW, VERSO)

Oil on panel  
3<sup>7</sup>/<sub>16</sub> x 6<sup>1</sup>/<sub>4</sub> inches



**JULIE HART BEERS**  
(1835–1913)

*After the Storm*

Oil on panel  
3<sup>3</sup>/<sub>4</sub> x 7<sup>1</sup>/<sub>4</sub> inches  
Signed lower left



**THERESA FERBER BERNSTEIN**  
(1890–2002)

*New York Public Library*

Oil on board  
6 x 8 inches  
Signed verso





**VIRGINIA FOUCHÉ BOLTON**  
(1929–2004)

*Spanish Moss, Lowcountry Swamp, SC*

Watercolor on paper  
21 x 28½ inches  
Signed lower right



**HARRIETTE BOWDOIN**  
(1880–1947)

*Spring Forest*

Mixed media on paper  
14 x 20 inches (sight)  
Signed lower left



**ANNA RICHARDS BREWSTER**  
(1870–1952)

*Miss Fidelia Bridges at Miss Brown's,  
Canaan, Connecticut, c. 1903*

Oil on canvas mounted to board  
8½ x 13 inches  
Signed lower left





**FIDELIA BRIDGES**  
(1834–1923)

*Seascape*

Chromolithograph on paper  
10 <sup>1</sup>/<sub>8</sub> x 14 <sup>3</sup>/<sub>8</sub> inches  
Signed in ink, lower right



**AGNES BROWN**  
(1847–1932)

*Landscape with White Birch*

Oil on board  
13 <sup>5</sup>/<sub>8</sub> x 10 <sup>1</sup>/<sub>4</sub> inches  
Signed verso



**REBECCA C. BUCHANAN**  
(FL. 1870's)

*Autumn Landscape*

Oil on canvas  
17 <sup>3</sup>/<sub>4</sub> x 23 <sup>7</sup>/<sub>8</sub> inches  
Signed lower right





B. JOHNSON

ADELAIDE BROOKS JOHNSON



**MINERVA JOSEPHINE CHAPMAN**  
**(1858–1947)**

*Lilacs*

Oil on canvas  
16 x 12½ inches  
Signed lower right Inscribed "Étude Fleurs"



**CLARA G. CHURCHILL**  
**(FL. 1906)**

*Still-life*

Watercolor on paper  
6½ x 10 inches  
Signed, dated 1906, and inscribed Corcoran  
Art School, Washington, D.C. l.r., l.l. and verso



**CLARA G. CHURCHILL**  
**(FL. 1906)**

*Oleander, Bermuda*

Watercolor on paper  
10½ x 11 inches  
Signed and inscribed with title, lower left





**JANE COOPER SULLY DARLEY**  
(1807–1877)

*Portrait of a Lady*

Oil on panel  
19 1/8 x 14 1/2 inches  
Signed and dated 1822, verso



**JANE COOPER SULLY DARLEY**  
(1807–1877)

*Portrait of Ellie Kendall, Age 2 1/2 years, 1848*

Oil on canvas  
20 x 17 1/4 inches  
Signed, dated 1848 and inscribed with title, verso



**SARAH E. DAVIS**  
(FL. 1870s)

*Still Life of Roses in an Alabaster Vase*

Oil on canvas  
10 x 8 inches each  
Each signed and dated 1865, lower left



**SARAH E. DAVIS**  
(FL. 1870s)

*Still-life of Roses in a Porcelain Vase*

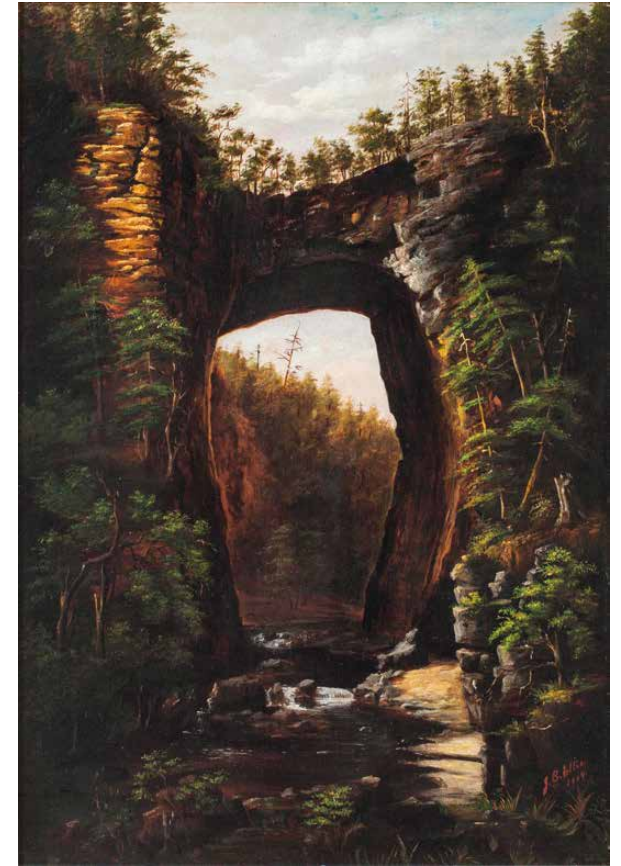
Oil on canvas  
10 x 8 inches each  
Each signed and dated 1865, lower left



**ALICE PREBLE TUCKER DE HAAS**  
(1859–1920)

*Dogwood Blossoms*

Watercolor on paper  
14 x 17 inches  
Signed lower right



**JOSEPHINE CHAMBERLAIN ELLIS**  
(1842–1913)

*Natural Bridge, Virginia*

Oil on canvas  
24 x 18 inches  
Signed and dated 1884, lower right





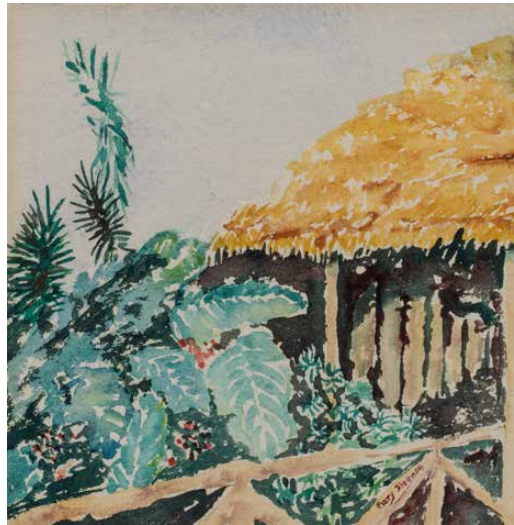
DOROTHEA LITZINGER



**HORTENSE TANENBAUM FERNE**  
(1889–1976)

*Activity: Lower Manhattan, New York City, c. 1935*  
(from *Brooklyn Bridge Park*)

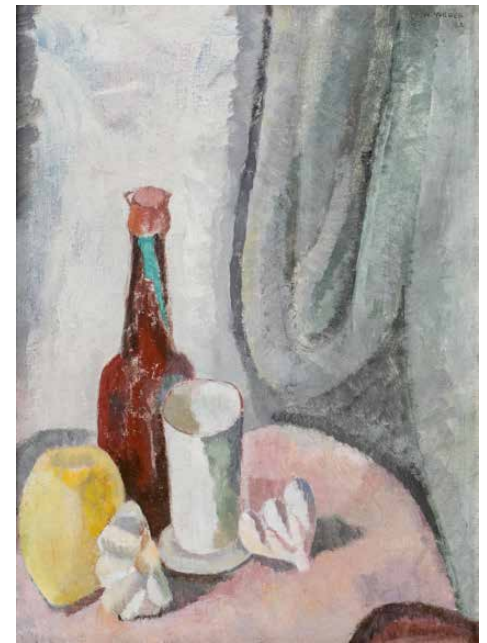
Oil on canvas  
18 x 23 inches  
Signed lower left



**MARY FLEENER**  
(20TH CENTURY)

*Thatch House Hawaii, 1950*

Watercolor on paper  
6<sup>3</sup>/<sub>4</sub> x 6<sup>3</sup>/<sub>4</sub> inches  
Signed lower right



**WILHELMINA WEBER FURLONG**  
(1878–1962)

*Still-life, Washington Square,*  
*New York, 1922*

Oil on canvas, mtd. on board  
16 x 12 inches  
Signed and dated 1922, recto  
Inscribed verso: 3 Washington Sq





**REBEKAH T. FURNESS**  
(1854–1937)

*At Pasture*

Oil on canvas  
15 x 25 inches  
Signed lower left



**MARY PEMBERTON GINTHER**  
(1869–1959)

*Autumn Brook*

Oil on canvas  
16 x 14 inches  
Signed lower left



**SARAH GOODRIDGE**  
(1788–1853)

*James Trask Woodbury &  
Augusta Porter Woodbury, 1828*

Watercolor miniatures on ivory  
4 7/8 x 2 3/4 and 3 3/4 x 2 3/4 inches



**ANN HALL**  
(1792–1863)

*Portrait of a Young Lady*

Watercolor on ivory  
3.7 x 3.1 inches, 1821  
Signed on reverse



**ALICE RONEY HARDWICK**  
(1876–1932)

*Spring Blossoms*

Oil on canvas  
23 1/4 x 27 1/4 inches  
Signed lower left



**ANNA ELIZA HARDY**  
(1839–1934)

*Roses*

Oil on canvas  
10 x 16 inches  
Signed lower left





EDITH PRELLWITZ



**HAZEL BARKER HAYES**  
**(1894–1984)**

*House in a Mountain Landscape*

Oil on canvas  
16 x 20 inches  
Signed lower right



**CLAUDE RAGUET HIRST**  
**(1855–1942)**

*Roses*

Oil on canvas  
8½ x 10½ inches  
Signed and dated 1881, lower right

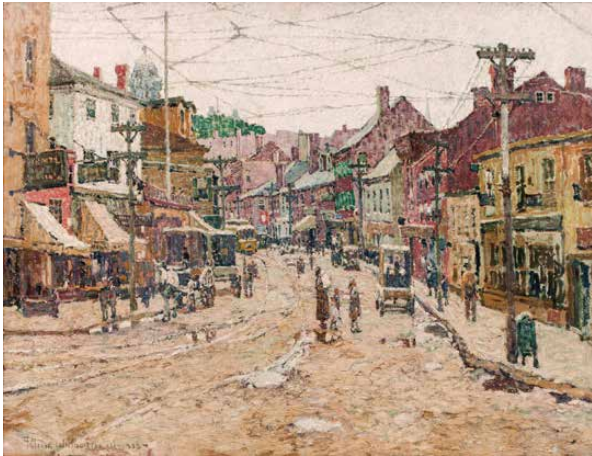


**CLAUDE RAGUET HIRST**  
**(1855–1942)**

*Still-Life of Books, a Candlestick and Glasses*

Oil on canvas  
12½ x 18¼ inches  
Signed lower right





**FELICIE WALDO HOWELL**  
(1897–1968)

*Main Street, Gloucester*

Oil on canvas  
30 3/4 x 40 3/8 inches  
Signed and dated 1918, lower left



**BENONI IRWIN**  
(1840–1896)

*The Artist*

Oil on canvas  
24 x 20 inches  
Signed and dated 1880, lower left



**ADELAIDE BROOKS JOHNSON**  
(1877–1959)

*Seascape at Sunset*

Oil on canvas  
20 x 30 inches  
Signed lower right



**HELEN MARY KNOWLTON**  
**(1832–1918)**

*Forest Path*

Oil on canvas  
28½ x 22½ inches  
Signed lower right



**ANNA ELIZABETH KLUMPKE**  
**(1856–1942)**

*Portrait of a Girl*

Oil on canvas  
15¼ x 10¼ inches  
Signed, dated and inscribed lower right: A.E.  
Klumpke, Paris, 91.

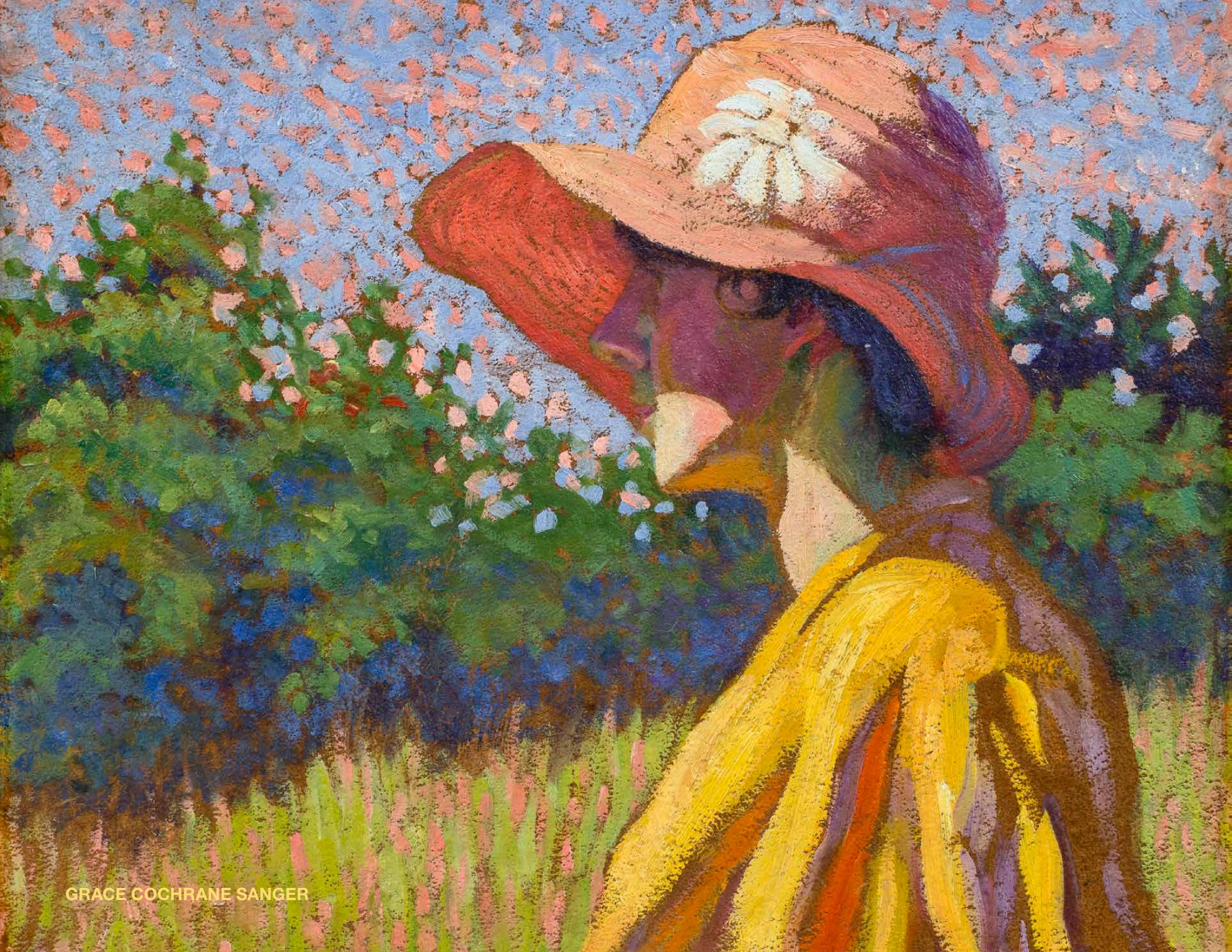


**DOROTHEA LITZINGER**  
**(1889–1925)**

*The Lily Pond*

Oil on canvas  
40 x 42 inches  
Signed lower right





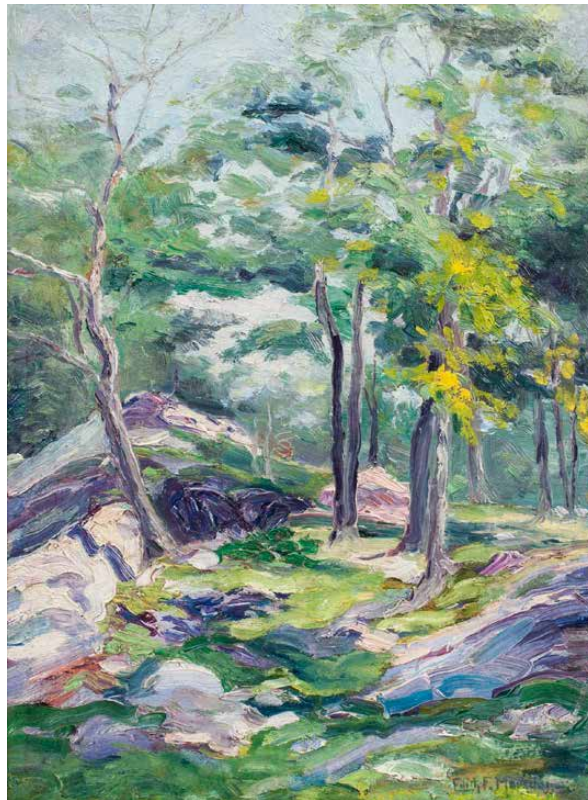
GRACE COCHRANE SANGER



**CAROLINE LORD**  
(1860–1927)

*Along the River Bank*, 1918

Oil on canvas  
16 1/8 x 22 1/8 inches  
Signed and dated 1918, lower right



**EDITH FRANCES MARSDEN**  
(1880–1946)

*Springtime in the Forest*

Oil on board  
16 x 12 inches  
Signed lower right



**EMMA COLLIN SEARS MARSH**  
(1871–1960)

*Sweetpeas*

Watercolor on paper  
16 1/2 x 22 1/2 inches  
Signed lower left





**HAZEL MASSEY**  
**(1907–1990)**

*Cherokee Roses*

Oil on canvas board  
16 x 12 inches  
Signed lower right



**ALICE LOLITA MUTH**  
**(BORN 1887)**

*In the Woods*

Oil on Canvas  
13¾ x 9½ inches  
Signed lower right



**ALICE LOLITA MUTH**  
**(BORN 1887)**

*Bare Trees*

Oil on canvas  
25 x 29 inches  
Signed lower right





**KATE W. NEWHALL**  
**(1840–1917)**

*Autumn on the Black Brook, 1876*

Oil on canvas

6 x 10 inches

Signed and dated, recto and verso: Kate W. Newhall; 1876



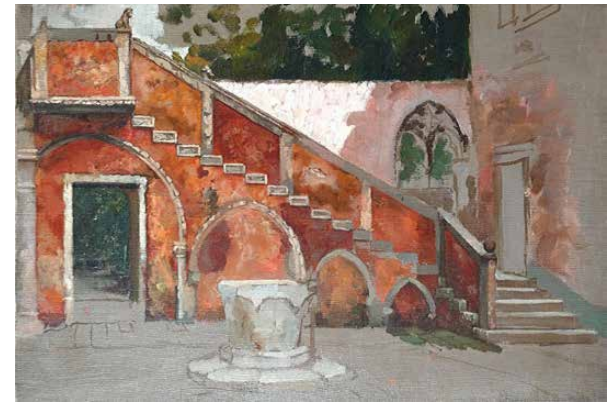
**KATE W. NEWHALL**  
**(1840–1917)**

*In the Sierras*

Oil on canvas

7 x 11 inches

Signed lower left



**RHODA HOLMES NICHOLLS**  
**(1854–1930)**

*Venetian Stairway*

Oil on canvas

15 x 22 inches

Signed lower right





IDA STEBBINS



**MINA FONDA OCHTMAN**  
(1862–1924)

*Apple Blossoms, Greenwich, CT*

Oil on panel  
12 x 16 inches  
Signed lower left



**IRENE E. PARMELLE (PARMELY)**  
(d. 1939)

*Still Life (The Cherry Pail)*

Oil on canvas  
18 x 14 inches  
Signed



**MARY JANE PEALE**  
(1827–1902)

*Still-Life with Fruit and Flowers*

Oil on board  
20 x 15 inches  
Signed lower right



**MARY JANE PEALE**  
(1827–1902)

*Albert Peale, Age 9, 1858*

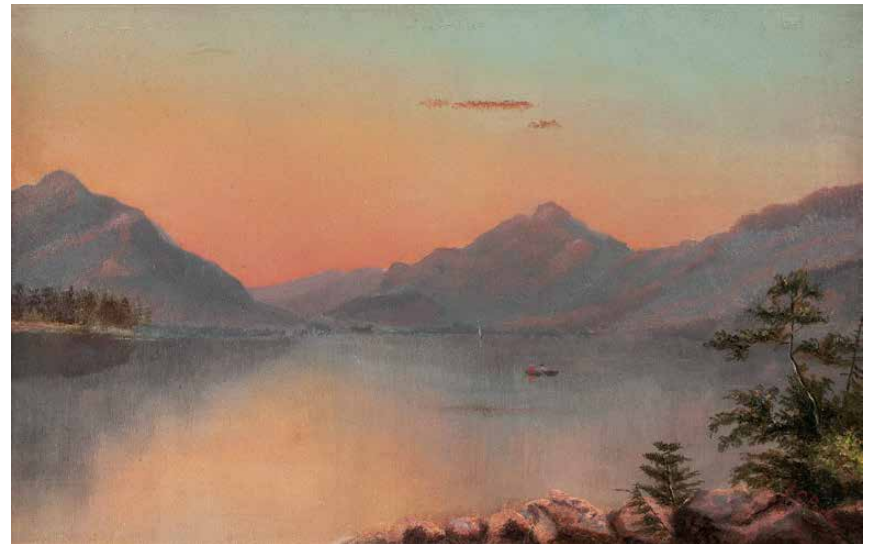
Oil on canvas laid on panel  
20 1/8 x 17 1/2 inches



**MARY JANE PEALE**  
(1827–1902)

*Clara E. Peale, 1858*

Oil on canvas laid on panel  
20 1/8 x 17 1/2 inches



**SUZANNE C. PORTER**  
(c. 1839–1887)

*Lake Placid, Adirondacks, c. 1879*

Oil on board  
6 7/8 x 10 3/4 inches  
Signed at lower right





**EDITH PRELLWITZ**  
(1864–1944)

*Overlooking New York, c. 1929*

Oil on canvas  
30½ x 48 inches  
Estate of the Artist



**FLORENCE VINCENT ROBINSON**  
(1874–1937)

*Woman Seated in Chair*

Watercolor on paper  
15 x 11 inches  
Estate of the Artist



**GRACE COCHRANE SANGER**  
(1885–1966)

*The Red Cloche*

Oil on canvasboard  
16 x 12 inches  
Signed lower left





MARY LORD STEVENS

M.L. Stevens. 1903.



**GRACE COCHRANE SANGER**  
(1881–1966)

*Woman in an Interior*

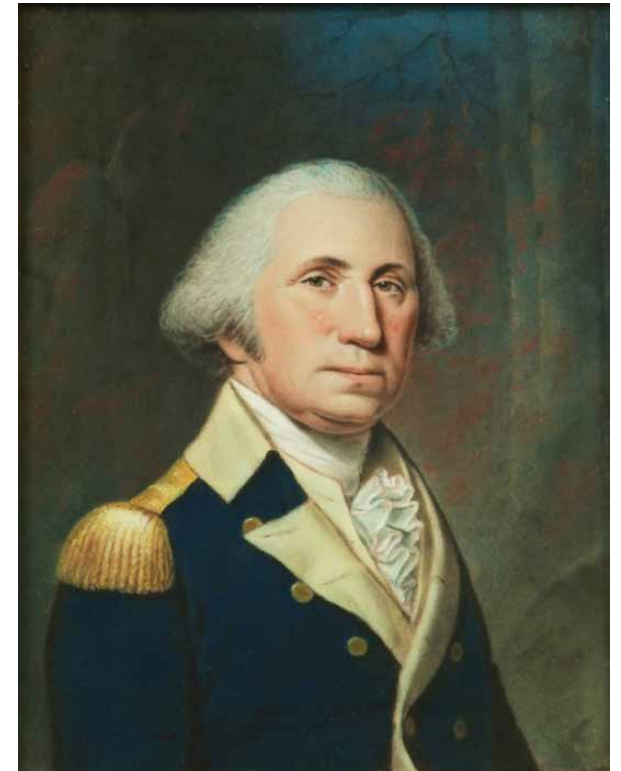
Watercolor on paper  
11 1/2 x 8 1/2 inches  
Signed lower right



**MARGARETT W. MCKEAN SARGENT**  
(1892–1978)

*Stepping Out, 1916*

Bronze  
14 x 6 x 8 inches  
Signed and dated on base



**ELLEN WALLACE SHARPLES**  
(1769–1849)

*Portrait of George Washington, c. 1800*

Pastel on paper  
9 1/4 x 7 1/4 inches



**ANNIE CORNELIA SHAW**  
(1852–1887)

*Summer, 1878*

Oil on panel  
9 x 5<sup>3</sup>/<sub>4</sub> inches  
Signed and dated 1878, lower left



**ANNIE CORNELIA SHAW**  
(1852–1887)

*Autumn, 1878*

Oil on panel  
9 x 5<sup>3</sup>/<sub>4</sub> inches  
Signed and dated 1878, lower left



**OLGA SORENSEN**  
(1877–1963)

*Still-life with Pipe, Books, and Jar*

Oil on canvas  
11 x 16 inches  
Signed and dated 1900, lower right





**IDA H. STEBBINS**  
(B. 1851)

*View of South Pond, New York, 1879*

Oil on canvas  
23 x 33 1/2 inches  
Signed and dated, lower left



**MARY LORD STEVENS**  
(1833–1920)

*Dusk at Sea*

Oil on paper mounted to board  
10 x 14 inches  
Signed and dated 1903, lower right



**AGNES LOUISE SYMMERS**  
(1882–1941)

*The Artist's Garden, Rye, NY*

Oil on canvas  
16 x 20 inches  
Signed lower left





ALICE LOLITA MUTH



**VIRGINIA CHANDLER TITCOMB**  
(1838–1912)

*In the Catskills, Looking Towards Hunter Mountain*

Oil on canvas  
9 x 14 inches  
Inscribed with title and initials on stretcher, verso



**REBECCA (NEWBOLD) VAN TRUMP**  
(1859–1935)

*Child Dancing*

Oil on canvas  
60 x 30 inches  
Signed lower right: R. Van Trump



**CLARA LOTTE VON MARCARD-CUCUEL**  
(1897–1968)

*Still Life with Magnolias in a Glass Vase*

Oil on canvas  
25 x 30 inches  
Signed lower right





**MATTIE C. VOORHEES**

*Coastal Landscape, 1879*

Oil on Panel

5 <sup>3</sup>/<sub>8</sub> x 8 <sup>5</sup>/<sub>8</sub> inches

Signed and dated 1879, lower right



**MARY JOSEPHINE WALTERS**  
**(1837–1883)**

*Autumn River with Punt in the Reeds*

Oil on canvas

13 <sup>1</sup>/<sub>4</sub> x 23 <sup>3</sup>/<sub>4</sub> inches

Inscribed in pencil on the stretcher



**VIRGINIA WEBB**  
**(1921–2012)**

*Autumn Color*

Oil on board

14 x 18 inches

Signed lower right





**MISS M.J. WHALEY**  
(1871–1938)

*Beach Scene at Coney Island, 1905*

Watercolor on paper  
10 1/8 x 14 1/4 inches  
Signed and dated 1905, lower right



**MARY MOTZ WILLS**  
(1875–1961)

*Grandi Flora, Magnolia Flower*

Watercolor on paper  
21 1/2 x 15 inches  
Signed lower right



**CAROLINE DAVIS WILSON**  
(1810–1890)

*Magnolias on a Tabletop, Charleston Gardens*

Watercolor on paper  
21 x 29 inches  
Signed lower right





**MINNIE RANKIN WYMAN**  
**(1871–1963)**

*Tabletop Bouquet*, 1888

Oil on canvas

15 1/2 x 23 1/4 inches

Signed and dated 1888, lower left