

# BREAKING ALL BOUNDS: AMERICAN WOMEN ARTISTS (1825–1945)

EXHIBITION AND SALE OF 50+ WORKS

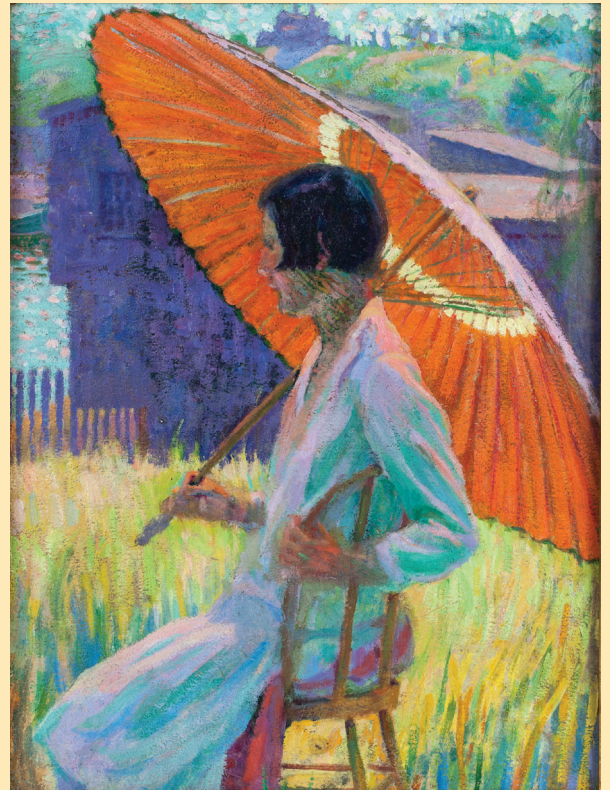
*A Comprehensive Exploration of the Talents of  
Female American Painters and Sculptors*



**FELICIE WALDO HOWELL (1897–1968)**

*Red Cross Parade, New York City, 1917*

Oil on board, 11 1/2 x 13 1/2 inches. Signed and dated, lower center



**GRACE COCHRANE SANGER (B. 1881)**

*The Red Parasol*

Oil on board, 16 x 12 inches, Signed verso

Featuring works by: Jane Peterson, Susie Barstow, Agnes Richmond, Fidelia Bridges, Maria Dixon, Hortense Ferne, Caroline Lord, Anna C. Peale, Mary J. Peale, Agnes Richmond, Margaret Sargent, Elizabeth Spawhawk Jones, Claude R. Hirst, Martha Bare, Olga Sorenson, Sophie Ley, Anna R. Brewster, Minerva Chapman, Virginia Titcomb, Josephine Walters, Mary Fairchild Low, Anna Hardy, Mina Ochtman, Hazel B. Hayes, Helen Knowlton, Edith Marsden, Agnes Brown, Minnie Rankin, Alice Hirsh, Elizabeth Remington, Suzanne Porter, Florence Robinson, Alice Hardwick, Rebecca Van Trump, Sophie Ley, Mary Ginther, Ilene Parmelle, Josephine Lewis and others.

A CATALOGUE IS AVAILABLE AND ALL THE WORKS ARE VIEWABLE AT  
[WWW.HAWTHORNEFINEART.COM/EXHIBITIONS](http://WWW.HAWTHORNEFINEART.COM/EXHIBITIONS)



HAWTHORNE  
Fine Art

12 East 86th Street, Suite 1425, NY, NY 10028 (BY APPOINTMENT)  
212.731.0550 \* [info@hawthornefineart.com](mailto:info@hawthornefineart.com) \* [hawthornefineart.com](http://hawthornefineart.com)