



TRIUMPHANT LIVES THREE:
AMERICAN WOMEN ARTISTS (1795-1950)

Welcome



RHODA HOLMES NICHOLLS (1854-1930)

Lady in the Woods, Oil on canvas
20 x 16 inches, Signed lower right

HAWTHORNE FINE ART has endeavored to bring to the fore the lives and works of obscure American women artists through focused exhibitions and scholarly research. The collection herein is comprised of more than two centuries of art by American women in a diverse range of styles, media, and subject matter. The work is exceptional due to the skill and artistry of its makers. It is also exceptional due to the spirit and tenacity with which they pursued their artistic lives. A career in the arts was no easy task for these 19th and 20th century women. As the historian Clara Clement Waters attested in 1904, "...a young girl might almost as reasonably attempt to reach the moon as to become an artist..."¹

It has been our great honor to research the lives of these remarkable women. We have carefully biographed each of the artists presented herein and are delighted to share their artistic legacies with you.



Please contact us for inquiries on the works presented herein by email: info@hawthornefineart.com or by phone: 212.731.0550 and read the biographies of their makers on our website: www.hawthornefineart.com.

Sincerely,

JENNIFER C. KRIEGER, *Managing Partner*
MEGAN BONGIOVANNI, *Research Associate*

HAWTHORNE FINE ART, LLC
135 East 57th Street, 14th Floor, New York, NY 10022 (by appointment)

¹Waters, Clara Erskine Clement. *Women in the Fine Arts: From the Seventh Century B.C. to the Twentieth Century A.D.* (Boston: Houghton, Mifflin and Co., 1904), xxxvi.



MARIE A'BECKET
(1839–1904)

Figures on a Forest Path
Oil on canvas
20 x 12 inches
Signed lower left



ELEANOR ABRAMS
(1885–1967)

Garden Steps, Bermuda
Oil on canvas board
14 x 9¾ inches
Signed lower left



GRETA ALLEN
(1881–1921)

Still-life of Irises and Peonies
Watercolor on paper
20 x 15 inches
Estate of the Artist



RUTH ANDERSON
(1891–1957)

Street Scene, Bruges
Oil on board
15 x 11 inches
Signed lower left



MARTHA BARE
(1864–1940)

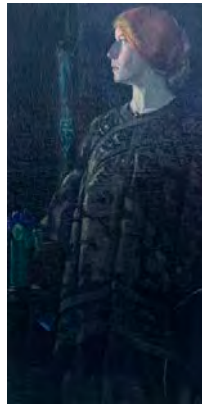
Still Life with Roses, 1891
Oil on canvas
29 x 20½ inches
Signed lower right

Exhibited World's Columbian Exposition, 1893



CAROLINE A. BASETER
(19TH C. - EARLY 20TH C.)

Still-life with Books
Oil on canvas
16 x 24 inches
Signed lower right



SUSIE M. BARSTOW
(1836–1923)

White Mountains
Oil on canvas
13 1/4 x 11 1/4 inches
Signed lower left

MARGARET LONGSTREITH BAUGH
(1864–1918)

Woman with Violets, c. 1901
Oil on canvas
26 3/4 x 13 3/4 inches
Signed lower right

ADELE FRANCES BEDELL
(1861–1957)

Landscape with Tree (recto)
Oil on panel
3 7/16 x 6 1/4 inches

ADELE FRANCES BEDELL
(1861–1957)

World's Columbia Exposition (verso)
Oil on panel
3 7/16 x 6 1/4 inches

ADELE FRANCES BEDELL
(1861–1957)

Landscape with Tree (verso)
Oil on panel
3 7/16 x 6 1/4 inches



ADELE FRANCES BEDELL
(1861–1957)

Mountain Landscape (recto)
Oil on panel
3 7/16 x 6 1/4 inches

JULIE HART BEERS
(1835–1913)

Quiet Brook
Oil on canvas
15 x 11 1/4 inches
Signed lower left

JULIE HART BEERS
(1835–1913)

The River Bend (Summer Landscape)
Oil on panel
8 x 12 inches
Unsigned
Inscribed verso: Christmas 1937/ Marion Kempson from Aunt Julia / Painting by Great-grandmother, Julia Hart Beers Kempson.

THERESA BERNSTEIN
(1890–2002)

Figures by a Fountain
Oil on panel
4 7/8 x 8 1/8 inches
Signed verso

MARY N. BLACK
(19th Century)

By the Riverbank, 1888
Oil on a porcelain plate
12 inches diameter
Signed and dated 1888, lower right
Signed, dated and inscribed with frame maker's name verso

VIRGINIA FOUCHÉ BOLTON
(1929–2004)

Spanish Moss, Lowcountry Swamp, SC
Watercolor on paper
21 x 28 1/2 inches
Signed lower right



MOLLY BOLTON
(1880-1948)

Portrait of a German Shepherd

Oil on canvas
5 inches diameter
Signed lower right

ANNA MARY RICHARDS BREWSTER
(1870-1952)

Arno River, Florence

Oil on canvas
9 x 16 inches
Signed lower left
Original Newcomb Macklin Frame

FIDELIA BRIDGES
(1834-1923)

Seascape

Chromolithograph on paper
10 1/8 x 14 3/8 inches
Signed in ink, lower right

VIRGINIA POWIS BROWN
(1908-1957)

View from the Porch, Washington Oaks, Florida

Watercolor and gouache on paper
13 x 18 inches
Signed lower right



AGNES BROWN
(1847-1932)

Landscape with White Birch
Oil on board
13⁵/₈ x 10¹/₄ inches
Signed verso

MARY CUMMINGS BROWNE
(1861-1939)

Woman Holding a Parasol, c. 1870-1880
Pencil on paper
10 x 7 inches
Estate of the Artist

MARY CUMMINGS BROWNE
(1861-1939)

Woman Sweeping, c. 1870-1880
Pencil on paper
10 x 7 inches
Estate of the Artist

ELLA BUCHANAN
(1869-1951)

Pastoral Landscape
Oil on canvas
18 x 24 inches
Signed lower left

REBECCA C. BUCHANAN
(FL. 1870's)

Autumn Landscape
Oil on canvas
17³/₄ x 23⁷/₈ inches
Signed lower right

ANNIE CAMPBELL
(1862-1951)

Ducks in Pond
Oil on canvas board
29 x 19 1/2 inches
Signed and dated 1928, lower right



**MINERVA JOSEPHINE CHAPMAN
(1858–1947)**

Lilacs
Oil on canvas
16 x 12½ inches
Signed lower right Inscribed “Étude Fleurs”

**CLARA G. CHURCHILL
(FL. 1906)**

Still-life
Watercolor on paper
6½ x 10 inches
Signed, dated 1906, and inscribed Corcoran
Art School, Washington, D.C. l.r., l.l. and verso

**CLARA G. CHURCHILL
(FL. 1906)**

Oleander, Bermuda
Watercolor on paper
10½ x 11 inches
Signed and inscribed with title, lower left

**CONSTANCE COCHRANE
(1888–1962)**

Town along the Coast
Oil on panel
8 x 10 inches
Signed lower right

**EDITH V. COCKCROFT
(1881–1962)**

From my Window, Concarneau
Oil on canvas
30 x 40 inches
Signed lower right



**CHARLOTTE BUELL COMAN
(1833-1924)**

In the Valley
Oil on canvas
14 x 10 1/4 inches
Signed lower left

**ROSE CHAMPION DE CRESPIGNY
(1859-1935)**

HMS Victory Entering The Downs With The Body Of Lord Nelson, 1805
Watercolor on paper
29 1/2 x 57 1/2 inches
Signed lower right

**CHARLOTTE THERESE DARCHÉ
(1892-1976)**

French Quarter, New Orleans
Oil on canvas
12 x 16 inches
Signed lower right

**JANE COOPER SULLY DARLEY
(1807-1877)**

Portrait of a Lady
Oil on panel
19 1/8 x 14 1/2 inches
Signed and dated 1822, verso

**ANN SOPHIA TOWNE DARRAH
(1892-1976)**

A View of the Androscoggin River Valley White Mountains, New Hampshire
Oil on board
23 1/2 x 37 inches
Signed lower left

**SARAH E. DAVIS
(FL. 1870s)**

Still-life of Roses in an Alabaster Vase
Oil on canvas
10 x 8 inches each
Each signed and dated 1865, lower left



SARAH E. DAVIS
(FL. 1870s)

Still-life of Roses in a Porcelain Vase
Oil on canvas
10 x 8 inches each
Each signed and dated 1865, lower left

GRACE C. DAY
(1892-1976)

Autumn Landscape
Oil on canvas
30 x 25 inches
Signed lower right

COLISTA MURRAY DOWLING
(1881 - 1968)

Imaginary Setting
Oil on canvas board
17 3/4 x 23 3/4 inches
Signed lower right

CORNELIA EARLE
(1859-1928)

Boats on the Intracoastal
Oil on canvas board
7 1/2 x 9 1/2 inches
Signed lower right

SOLD

MARY LILLIAN FENN
(1867-1950)

The Cliffs, California
Oil on panel
9 1/2 x 13 1/2 inches
Signed lower right; titled verso

ZOE WORTHINGTON FISKE
(1864-1942)

Sunset Study 1
Oil on canvas
9 1/2 x 13 inches
Signed verso



ZOE WORTHINGTON FISKE
(1864-1942)

Sunset Study 2
Oil on canvas
9 1/2 x 13 inches
Signed verso

MARY FLEENER
(20th Century)

Thatch House Hawaii, 1950
Watercolor on paper
6 3/4 x 6 3/4 inches
Signed lower right

EMMA BAILEY FRASER
(1881-1957)

Chickadees
Pastel on paper
8 1/2 x 6 1/2 inches
Signed lower right

ALICE HELM FRENCH
(1864-1950)

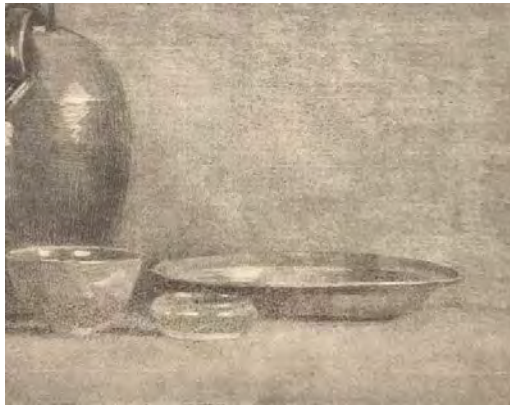
Evening Snow Scene
Pastel on paper
9 1/2 x 12 inches (Sight Size)
Signed and dated Dec 1902, lower right

MAREN FROELICH
(1868-19210)

Luxembourg Gardens, Paris
Oil on board (double-sided with drawing on back)
6 1/2 x 9 inches
Signed and inscribed Paris, lower left

REBEKAH T. FURNESS
(1854-1937)

At Pasture
Oil on canvas
15 x 25 inches
Signed lower left



MARY PEMBERTON GINTHER
(1869–1959)

Autumn Brook
Oil on canvas
16 x 14 inches
Signed lower left

MARY L. HAINES
(1866–1951)

House with Tree
Oil on canvas
23 x 17 inches
Signed verso

MARY L. HAINES
(1866–1951)

Tree Landscape
Oil on canvas
22 1/8 x 16 inches

MARY L. HAINES
(1866–1951)

Still-life, Southampton, 1909
Charcoal on paper
12 x 18 inches
Signed and inscribed with location, verso

HILDEGARDE H. HAMILTON
(1898–1970)

*4 Gramercy Park, Mayor Harper's House,
Manhattan. C. 1930*
Oil on canvas board
14 x 11 inches
Signed lower right
Inscribed with location verso

ANNA ELIZA HARDY
(1839–1934)

Roses
Oil on canvas
10 x 16 inches
Signed lower left



ANNA ELIZA HARDY
(1839–1934)

The Rose Terrace
Oil on canvas
17 1/2 x 14 1/4 inches
Signed lower right

EMELINE H. HARRINGTON
(1862–1956)

Summer Hillside
Pastel on paper
10 1/4 x 9 inches
Signed lower right

SARAH E. HARVEY
(1834–1924)

Tropical Landscape
Oil on canvas
15 3/4 x 28 inches
Signed lower right

LAURA TREVITTE HORNE
(1891–1958)

Spring in Central Park
Oil on board
8 x 10 inches
Signed lower right
Inscribed with title, verso

GEORGIANA HOWLAND
(1862–1929)

Long Island Landscape
Oil on board
20 x 24 inches
Signed lower left;
Signed again and inscribed verso: 37 East 35th St.

LIZBETH C. HUNTER
(1868–1948)

Poppies
Watercolor on board
10 x 8 1/2 inches
Signed lower right



BENONI IRWIN
(1840–1896)

The Artist
Oil on canvas
24 x 20 inches
Signed and dated 1880, lower left

SOLD

ALICE ARCHER SEWALL JAMES
(1870–1955)

Evening in the Marshes
Oil on board
5 1/4 x 9 inches
Signed lower right

ADELAIDE BROOKS JOHNSON
(1877–1959)

Seascape at Sunset
Oil on canvas
20 x 30 inches
Signed lower right

ALICIA M. KEYES
(1855–1924)

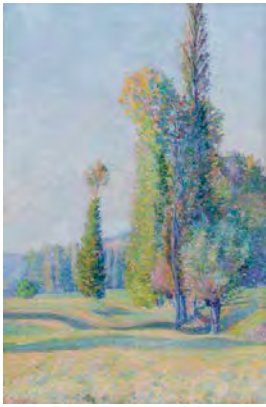
*Park Street, Boston in Winter - A View
of Boston Common and the Public
Gardens, c. 1900-10*
Oil on canvas mounted on board
10 1/2 x 9 inches
Inscribed on original backing

MARY ELIZABETH KING
(1899–1991)

Moonlight on the River
Oil on canvas
22 x 18 inches
Signed lower right

ANNA ELIZABETH KLUMPKE
(1856–1942)

Portrait of a Girl
Oil on canvas
15 1/4 x 10 1/4 inches
Signed, dated and inscribed lower
right: A.E. Klumpke, Paris, 91.



JOSEPHINE MILES LEWIS
(1865-1959)

Giverny, France, 1894
Oil on canvas
31 x 21 inches
Signed lower left

CAROLINE LORD
(1860-1927)

Along the River Bank, 1918
Oil on canvas
16 1/8 x 22 1/8 inches
Signed and dated 1918, lower right

NINA MACGREGOR
(1870-1961)

Falling Leaves
Oil on board
10 x 12 Inches
Signed lower right

SARAH RHODES MACKNIGHT
(Late 19th Century)

Lois, The Witch of Salem, ca. 1881
Oil on canvas
22 x 14 Inches
Signed lower right

EDITH MARIAN MANN
(1893-1976)

Shepherd through the Trees
Oil on canvas
15 x 18 Inches
Estate of the Artist

EDITH MARIAN MANN
(1893-1976)

Summer Afternoon
Oil on canvas
19 3/4 x 25 3/8 Inches
Signed lower left



**EDITH FRANCES MARSDEN
(1880–1946)**

Springtime in the Forest
Oil on board
16 x 12 inches
Signed lower right

**EMMA COLLIN SEARS MARSH
(1871–1960)**

Sweetpeas
Watercolor on paper
16½ x 22½ inches
Signed lower left

**HAZEL MASSEY
(1907–1990)**

Cherokee Roses
Oil on canvas board
16 x 12 inches
Signed lower right

**FANNIE BARBER MCCLANAHAN
(1858–1926)**

View of the Hudson River, 1880
Oil on panel
4 ½ x 9 ⅛ inches
Signed and dated 1880, lower left

**MARY LANE MCMILLAN
(1883–1976)**

Young Girl with Parasol, c. 1910–1915
Oil on canvas
20 x 16 inches
Estate stamp verso

**MARY LANE MCMILLAN
(1883–1976)**

An Italian Garden, 1910
Oil on canvas
16 x 20 inches
Signed lower right



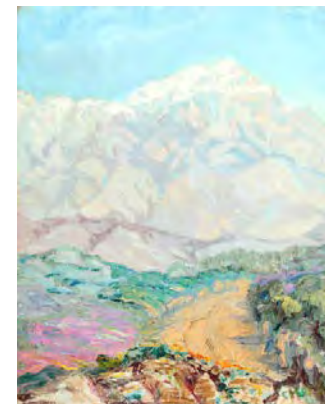
ANNA LEA MERRITT
(1844-1930)

Eve, 1887
Etching on paper
13 ¹/₁₆ x 18 ¹³/₁₆ inches
Signed in pencil, lower left



HARRIET E. MONTEITH
(1844-1930)

Sailing on the St. Joe River, Indiana
Oil on canvas
8 x 10 inches
Signed lower right; Inscribed with title



CHARLOTTE A. MORTON
(1884-1974)

Mountain near Palm Springs, c. 1941
Oil on board
19 ³/₄ x 16 inches
Signed lower right;
Exhibition label verso



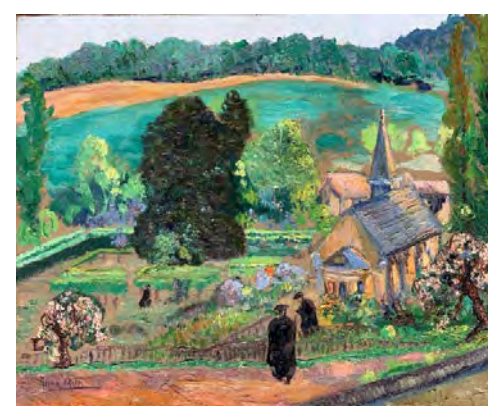
NELLY LITTLEHALE MURPHY
(1867-1941)

Tree Study at Twilight
Mixed media on paper
9 x 5 ¹/₄ inches (sight)
Signed with monogrammed signature, lower right



ALICE LOLITA MUTH
(1887-1952)

Countryside Villa
Oil on canvas
31 x 25 inches
Signed lower right



ALICE LOLITA MUTH
(1887-1952)

Port-Royal
Oil on canvas
20 x 24 inches
Signed lower left



**ALICE LOLITA MUTH
(1887-1952)**

Still-life of Oeillets and Figurine

Oil on canvas
31 ³/₈ x 29 ³/₈ inches
Signed lower right

**ALICE LOLITA MUTH
(1887-1952)**

Still Life with Copper Pot and Vase

Oil on canvas
45 ³/₄ x 34 ¹/₂ inches
Signed lower center

**ALICE LOLITA MUTH
(1887-1952)**

Portrait d'un Tunisien

Oil on wood
17 ¹/₁₆ x 14 ¹/₄ inches
Signed lower right

**ALICE LOLITA MUTH
(1887-1952)**

Portrait de deux Tunisiennes

Oil on wood
29 ¹/₂ x 26 ³/₄ inches
Signed lower right

**ALICE LOLITA MUTH
(1887-1952)**

Hilly Landscape with Grove

Oil on wood
41 ³/₄ x 49 ¹/₂ inches
Signed lower left

**KATE W. NEWHALL
(1840-1917)**

In the Sierras

Oil on panel
7 x 11 inches
Signed lower left



RHODA HOLMES NICHOLLS
(1854-1930)

Lady in the Woods
Oil on canvas
20 x 16 inches
Signed lower right



RHODA HOLMES NICHOLLS
(1854-1930)

Massachusetts Houses, 1905-1910
Watercolor on paper
12 x 9 inches
Inscribed verso



EDITH PAGE
(1855-1916)

June Rose Garden
Watercolor on paper
13 1/2 x 19 1/2 inches
Signed and dated 1889, lower right



PAULINE PALMER
(1867-1938)

Mother and Child
Oil on canvas board
10 1/2 x 13 3/4 inches
Signed lower right



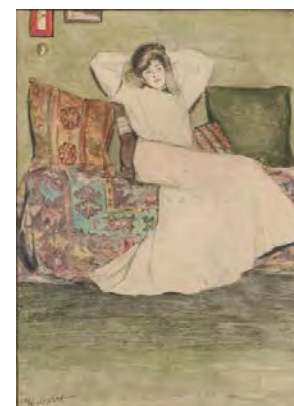
MARY JANE PEALE
(1827-1902)

Still-Life with Fruit and Flowers
Oil on board
20 x 15 inches
Signed lower right



MARY JANE PEALE
(1827-1902)

Albert Peale, Age 9, 1858
Oil on canvas laid on panel
20 1/8 x 17 1/2 inches



MARY JANE PEALE
(1827–1902)

Clara E. Peale, 1858
Oil on canvas laid on panel
20 1/8 x 17 1/2 inches

MABEL PUGH
(1891–1986)

Arboreal Landscape
Oil on board
7 3/4 x 4 1/2 inches
Signed at lower right

AGNES RICHMOND
(1870–1964)

Gloucester Rocks, Ten Pound Island
c. 1914–15
Oil on canvas
20 x 24 inches
Estate stamp on verso

ELLEN ROBBINS
(1828–1905)

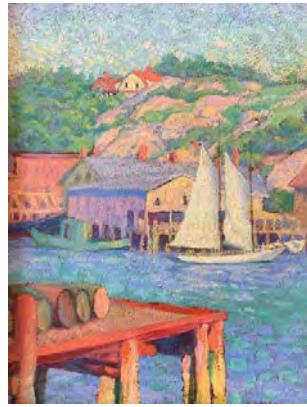
Still-life of Flowers, Fern and Berries
Watercolor on paper
15 1/2 x 10 inches
Signed lower center

OLIVE RUSH
(1873–1966)

Washington Square
Oil on canvas
24 x 32 inches
Signed lower right

GRACE COCHRANE SANGER
(1881–1966)

Woman in an Interior
Watercolor on paper
11 1/2 x 8 1/2 inches
Signed lower right



**GRACE COCHRANE SANGER
(1881–1966)**

Reading
Oil on canvas
18 x 16 inches
Signed verso

**GRACE COCHRANE SANGER
(1881–1966)**

Harbor and Hillside
Oil on canvas
12 x 9 inches
Signed verso

**MARGARETT W. MCKEAN SARGENT
(1892–1978)**

Stepping Out, 1916
Bronze
14 x 6 x 8 inches
Signed and dated on base

**EDITH SCOTT
(1877–1978)**

Pastoral Landscape with Steer
Oil on canvas
15 x 20 inches
Signed lower left

**MRS. MARTHA J. SHAW
(19TH CENTURY)**

In the Conservatory
Oil on canvas
13 1/4 x 18 5/8 inches
Signed lower left

**ALICE STACKPOLE
(c.1867–1949)**

*A Flower Border, Battelle House,
Mattapoisett, Massachusetts, 1912*
Pastel on paper
12 x 16 inches
Signed and dated 1912, lower left
Inscribed with location verso



IDA H. STEBBINS
(B. 1851)

View of South Pond, New York, 1879
Oil on canvas
23 x 33½ inches
Signed and dated, lower left

MARY LORD STEVENS
(1833–1920)

Dusk at Sea
Oil on paper mounted to board
10 x 14 inches
Signed and dated 1903, lower right

MARY LORD STEVENS
(1833–1920)

Wildflowers along a Country Road
Oil on paper mounted to board
10 x 14 inches
Signed and dated 1903, lower right

MARY LORD STEVENS
(1833–1920)

Path Through the Forest
Oil on paper mounted to board
10 x 14 inches
Signed and dated 1903, lower right

LOUISE A. TABER
(1851–1944)

Sawyer's Pond, White Mts, N.H.
Oil on board
5 x 9 ¼ inches
Signed, dated March 16, 1872, and titled
on verso



NELLIE LOUISE THOMPSON
(1861-1935)

Early Evening, Gloucester Harbor
Watercolor on paper
7 x 20 inches
Signed lower left

VIRGINIA CHANDLER TITCOMB
(1838-1912)

*In the Catskills, Looking Towards
Hunter Mountain*
Oil on canvas
9 x 14 inches
Inscribed with title and initials on
stretcher, verso

HELEN MARIA TURNER
(1858-1958)

Portrait of Ann Spencer
Oil on canvas
20 x 16 inches

HELEN MARIA TURNER
(1858-1958)

Landscape at Cragsmoor
Oil on canvas
19 1/2 x 24 inches
Signed lower left

BEATRICE WHITNEY VAN NESS
(1888-1981)

The Shore
Watercolor on paper
11 1/4 x 15 3/8 inches
Signed lower right



**REBECCA (NEWBOLD) VAN TRUMP
(1859–1935)**

Child Dancing
Oil on canvas
60 x 30 inches
Signed lower right: R. Van Trump

**CLARA LOTTE VON MARCARD-CUCUEL
(1897–1968)**

Still Life with Magnolias in a Glass Vase
Oil on canvas
25 x 30 inches
Signed lower right

**MATTIE C. VOORHEES
(19TH CENTURY)**

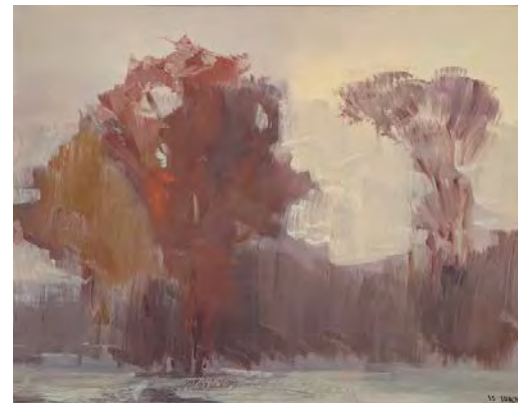
Coastal Landscape, 1879
Oil on Panel
5³/₈ x 8⁵/₈ inches
Signed and dated 1879, lower right

**MARY JOSEPHINE WALTERS
(1837–1883)**

Autumn River with Punt in the Reeds
Oil on canvas
13¹/₄ x 23³/₄ inches
Inscribed in pencil on the stretcher

**MARY JOSEPHINE WALTERS
(1837–1883)**

Woodland Landscape
Oil on canvas
14 x 24 inches
Signed lower right



SUSAN WATERS
(1823–1900)

Catherine Quackenbush Slade, 1844
Oil on canvas
30 x 25 inches
Exhibited and published in *Securing the Shadow:
Posthumous Portraiture in America*

CATHERINE W. WATKINS
(1861–1947)

Michigan Poplars
Oil on Artists Board
14 3/8 x 9 3/4 Inches
Signed lower right
Signed and inscribed with title on original label,
verso

VIRGINIA WEBB
(1921–2012)

Autumn Color
Oil on board
14 x 18 inches
Signed lower right

MISS M.J. WHALEY
(1871–1938)

Beach Scene at Coney Island, 1905
Watercolor on paper
10 1/8 x 14 1/4 inches
Signed and dated 1905, lower right

MARY MOTZ WILLS
(1875–1961)

Grandi Flora, Magnolia Flower
Watercolor on paper
21 1/2 x 15 inches
Signed lower right

CAROLINE DAVIS WILSON
(1810–1890)

Magnolias on a Tabletop, Charleston Gardens
Watercolor on paper
21 x 29 inches
Signed lower right



MAY WHEELLOCK
(Fl. Late 19th Century)

On the Esopus Creek, Catskills, 1878
Watercolor on paper
12 x 20 inches
Signed and dated 1878, lower left

LAURA WOODWARD
(1834–1926)

Autumn, 1878
Oil on canvas
14 x 11 1/4 inches
Signed lower left; dated 1878, lower right

LAURA WOODWARD
(1834–1926)

Camel's Hump, Vermont, 1877
Oil on canvas
14 x 24 inches
Signed and dated lower left

MINNIE RANKIN WYMAN
(1871–1963)

Tabletop Bouquet, 1888
Oil on canvas
15 1/2 x 23 1/4 inches
Signed and dated 1888, lower left



HAWTHORNE
Fine Art

Manhattan Showroom, 135 East 57th Street, 14th Floor, New York, NY 10022 (By Appointment)
P.O. Box 140 Irvington, NY 10533 (MAILING ADDRESS)
(212) 731-0550 • info@hawthornefineart.com • www.hawthornefineart.com