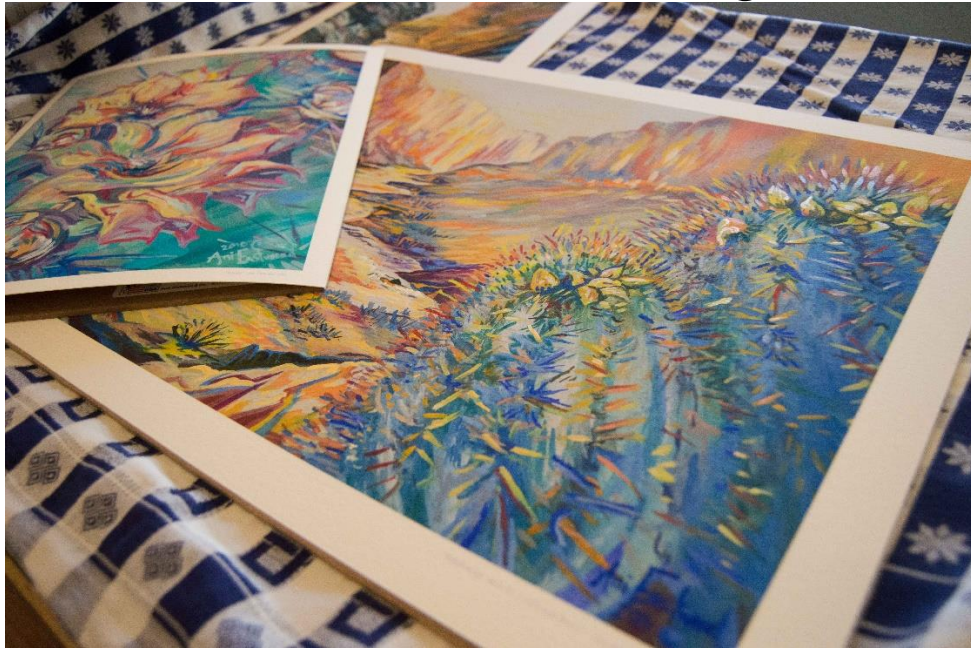


Artists of Montana Giclee Printing Services



Professional Giclée Printing Services, specializing in reproducing artist's and photographer's images with the highest quality materials with over 15 years of experience as a professional artist and 10 years as a printer. I work with you until you are thrilled with the quality of your reproduction.

I use a state of the art giclée printer and archival quality canvas, papers and ink. Images produced are the finest gallery quality reproductions, known to last 75-100 years. Prices are very affordable with little setup cost to help students and upcoming artists/photographers market artwork for affordable Montana Prices.

- Color Matching/Proofing/Editing in Photoshop for the customer's satisfaction guarantees a quality representation of your digital image and artwork.
- I can work from your digital files and have many ways to receive files or we can photo. Photography of paintings and originals also available \$45per image or \$35each if you have over 4 images for zip drive (Comes with a Watermarked Web version, Photoshop Edited and Raw File: 300dpi)
- EVERYTHING starts with a great digital image. Digital images print best if they are at least 300DPI and need to at least be 250DPI. Note: Images from cell phone or smart phones are not good enough quality to print a large fine art image. Please contact me if have any questions about getting a good digital image

Proofing Costs and Quotes

Please feel free to contact me for a quote for your individual project

- 1st proof/setup \$25: mailed sample (usually 8"x10") for you to check color etc (proofing is not mandatory for \leq than 9"x 12)
- There is no obligation to order a larger print after proofing. For any reason, if you are not satisfied with your proof or just change your mind about moving forward, I will only charge for the proofing cost. Once you have ok'd the proofing, all sales are final. I require payment in full at time of delivery or prior to shipment.
- If additional proofing/setup/editing is needed by the purchaser for color adjustments/enhancements (18/hr charged for extensive editing, \$20re-proofing)



"Trapper's Peak, Montana" Ani Eastwood 2016



Examples of Color matching and available title formatting included in setup cost
 Left: Original Painting on bottom by Nicole Crisp: Florence Montana
 Middle: Title Formatting available in multiple fonts and colors (title name date etc.)
 Right: Example of original oil and canvas reproduction (original oil on right)

Printing Costs

Giclée prints are priced by the square inch. Below is an equation for your convenience.

5% discount on order for multiple prints and first time clients

Please remember to add an unprinted border on your original dimensions for framing. (1"-2"border on all sides)

All Papers and Canvas are Acid Free Archival Fine Art Quality/ Color Profiled

\$0.14square inch for Thick Fine Art Bright White(205GSM)

\$0.14square inch for Artistic Matte Canvas (Un-stretched Price: See below for stretching cost, 4" border required)

\$0.14square inch for Semi Gloss Premium Photography 280GSM

\$0.14square inch for German Hannemule cold press warm natural texture

\$0.15square inch for Kodack Metallic Photography Gloss

\$0.18square inch German Hannemule watercolor texture paper

\$0.17square inch Canvas Paper (Only available up to 11"x17")

Japanese Awagami Rice Pape:Imported (Available in ≤ 11"x14" for \$35 per print and 11"x17"\$45 per print

Deckle Edge 8.5x11 Epson Paper \$28 per print

Samples available upon request:

Cost Estimator:

Width x Height x (paper or canvas cost: Above) + \$25.00 setup fee/proof=

Example: For 11"x 14" with 1" border= Width 13" x16" x \$0.14

Fine Art Bright White Paper=\$29.12

Giclee Print Order Standard Turnaround Times

I process all giclee orders as quickly as possible, while still working to achieve a high level of detail and quality in my work. From the time I receive a digital image, I work to process a reasonably sized order of 1-2 images in 3-5 business days. Each order takes editing, proofing, formatting, hand-cutting and packaging. Please allow at least 2 business days for you to receive/review your mailed proof and another 2-3 business days for the arranged delivery/shipment of the final print. Handcrafted wood and stretched canvas will take longer to construct and can be quoted individually. If you need a rushed order (1-2 day pickup), I will have to assess if I could get the project done in this amount of time individually and charge an additional \$40.00 for expedited delivery, Although making a high quality giclee print may take a little more time and care than printing a standard color copy, the end result from an experienced printer is well worth the wait and incomparable!

Options for Stretched Canvas Giclée:

Gallery Wrap: Mirror Image sides Photography Floating Frames Stile and Rale Wood

Equation used: $\text{Width} \times \text{Height} \times 0.32$ (labor and supplies+ \$18.00 mirror image setup if applicable) = Total Cost for finishing

Note* Both Gallery wrap and Floating Frames cost width x height x .32. /Stile and Rale costs width x height x .42)

Example : (11" wide x 14" H x 0.32 (labor and supplies: Wood, Hardware)+Mirror imaging setup \$18= Total \$67.28 for the frame setup.

This will come as a fully stretched, finished, ready to hang gallery quality piece with wire and metal corner brackets. (can choose back stain color)

Note: If canvas frame is under 11"x14" cost for building frame is \$40.00 to cover supplies and time (Prices in example do not include the printing cost: Please refer to printing cost above or contact me for more details or a quote!)



Shipping/Pick Up

- **Once order is ok'd by you for final printing, all sales are final with payment due at time of delivery or before shipment.**
- Credit Cards can be processed with 3% additional charge and can be taken via paypal/email or over the phone
- **Shipping**

There are many artists I work with via email only that live out of town. Please contact me for quotes on shipping charges. I professionally package prints to ensure safe delivery and insure all packages for the full amount of project. If any damages occurred beyond this, I would be happy to work with you to make sure you are compensated or get a replacement.

Contact Information:

**Please feel free to contact me for a quote or questions about your specific project
Free consultations on any project, including sample packets of available papers**

**Ani Eastwood
AniEastwoodFineArt@yahoo.com
406-273-8489**

**For Appointments: Please schedule online via website or via email/phone
Address: 910 Brooks Street, LL2, Missoula M ontana: Appointment Only**

