

Building Services Design Ltd.

Chartered MEP Consulting Engineers



Capability Statement

Building Services Design Ltd
Unit G203, 2nd Floor
Regent Village West
Grace Bay, Providenciales
Turks and Caicos Islands
British West Indies

Tel Office: (649) 946 8504
Cellular: (649) 331-3890
Fax: (649) 946 8506
Email: bsd@tcway.tc

INDEX

	Page No.
1.0 Introduction	4
2.0 Major Clients.....	5
3.0 Selected List of General Practice Experience	
(A) Condominium/Resorts.....	5
(B) Commercial.....	20
(C) Government/Public Sector.....	25
(D) Healthcare.....	27
(E) Private Residences.....	27
(F) Charitable Work.....	28
4.0 Professional Indemnity Insurance.....	29
5.0 IT Resources.....	29

1.0 Introduction

Building Services Design Ltd., was established in April 2004 to meet the “gap” in the MEP design and consulting sector within the Turks and Caicos Islands. The Company is able to provide full engineering (MEP) services for the needs of high profile developments in the Turks and Caicos Island and other areas of the Caribbean.

Graham Shaw, Director of Building Services Design Ltd., as a Chartered Engineer holds an Honours Degree in Civil Engineering (University of Glasgow 1984) and a Masters Degree in Building Services Engineering (University of Glasgow 1990). He is also a Member of the Chartered Institute of Building Services Engineers (CIBSE); Member of The American Society of Heating, Refrigeration and Air-Conditioning Engineers (ASHRAE) and a Member of the National Fire Protection Association (NFPA).

Graham Shaw has been working on Providenciales for the last seventeen years. As Director of Building Services Design Ltd, he is able to offer over 25 years of combined experience in the international field of mechanical, electrical and plumbing (MEP) design and project management. Extensive global experience in residential, commercial, leisure, industrial (hi-tech) and government projects enables the Client to hold peace of mind in ensuring that a professionally registered engineer, in liaison with the architect, structural and civil engineers, has completed the design which will meet and support the Client's diverse range of engineering needs. Building Services Design Ltd has six full-time professionally qualified engineers capable of designing mechanical, electrical and fire protection systems.

It is the aim of Building Services Design Ltd, to provide all clients with professional impartial and practical advice at all stages of projects through close co-operation and communication with other members of the project team. Work is carried out following full consultation with the client and will incorporate innovative aspects of energy conservation procedures and in full accordance with mandatory regulations and local codes.

2.0 Major Clients

- Caicos Resorts Ltd. (Amanyara Resort & Spa)
- The Turks & Caicos Sporting Club (Ambergris Cay Partnership)
- The O Property Collection (Dellis Cay)
- Simon Wood Associates Ltd.
- Hartling Group
- John Redmond and Associates
- Rafael Amuchastegui Design
- Bouygues Bâtiment International
- Boyken International (West Caicos Ritz Carlton Resort)
- Kew Capital
- Circle Holdings Ltd.

3.0 Selected List of General Practice Experience

(A) Condominiums/Resorts

<u>Client/Project Value</u>		<u>Projects</u>	<u>Year</u>
TVA Consultants	US\$80m	Silver Sands Resort , Grenada Complete MEP design	2015
John Redmond & Associates	US\$4.5M	Mango Reef and Marina , Providenciales Complete MEP Design	2015
Four Seasons	US\$5m+	Private Residences , Nevis Complete MEP design	2014
Kew Capital	US\$10M+	WEST CAICOS RITZ CARLTON RESORT Continued with MEP Design for Condominiums, Villas and infrastructure works	2014
Circle Holdings Ltd.	US\$100M	THIRD TURTLE CLUB , Providenciales Engaged for the complete MEP Design (<i>Project on hold due to financing issues</i>)	2014
Fort Capital	US\$50M	Norman's Cay , Bahamas Complete MEP design for Phase 1	2013-2014
Grace Bay Club	US\$15M	Luxury Villas/Residences , Providenciales Complete MEP design	2013-2014

<u>Client/Project Value</u>	<u>Projects</u>	<u>Year</u>
The Hartling Group US\$75M+	Shoreclub , Providenciales Complete MEP design for Phase I and Phase II.	2013-2014
CMK Ltd. US\$20M+	SAILROCK INN , South Caicos Complete MEP design for boutique hotel and accompanying villas (30#).	2013-2014
John Redmond & Associates US\$100M+	WATER COLOURS Phase 2 , Cayman Islands, Complete MEP re-design for new nine storey condo development.	2011-2014
John Redmond & Associates US\$6M	Cooper Jack Marina and Infrastructure Providenciales Complete MEP Design	2013
Caicos Resorts Ltd. US\$5M	Amanyara Tennis Complex & Consultant's Accommodation Providenciales Complete MEP design	2013
Caicos Resorts Ltd. US\$5M+	Amanyara , Providenciales Complete MEP design of modifications to the existing Amanyara villas	2012
SCI HAITI SA US\$7M	Mont Joli Hotel , Cap Haitian Complete MEP design for Phase 1 and Phase 2	2012
LUPA Haiti, SA US\$2M	Montana Hotel, Port-au-Prince Haiti Complete MEP Design for plumbing electrical services only	2012
Scrubs Island Development Group US\$1M+	SCRUBS ISLAND RESORT , British Virgin Islands, Complete MEP design for IT facility.	2009



Water Colours Condo Development, Cayman Islands



The Third Turtle Club, Providenciales



The Shore Club, Long Bay Beach, Providenciales



CAYA at Grace Bay, Providenciales



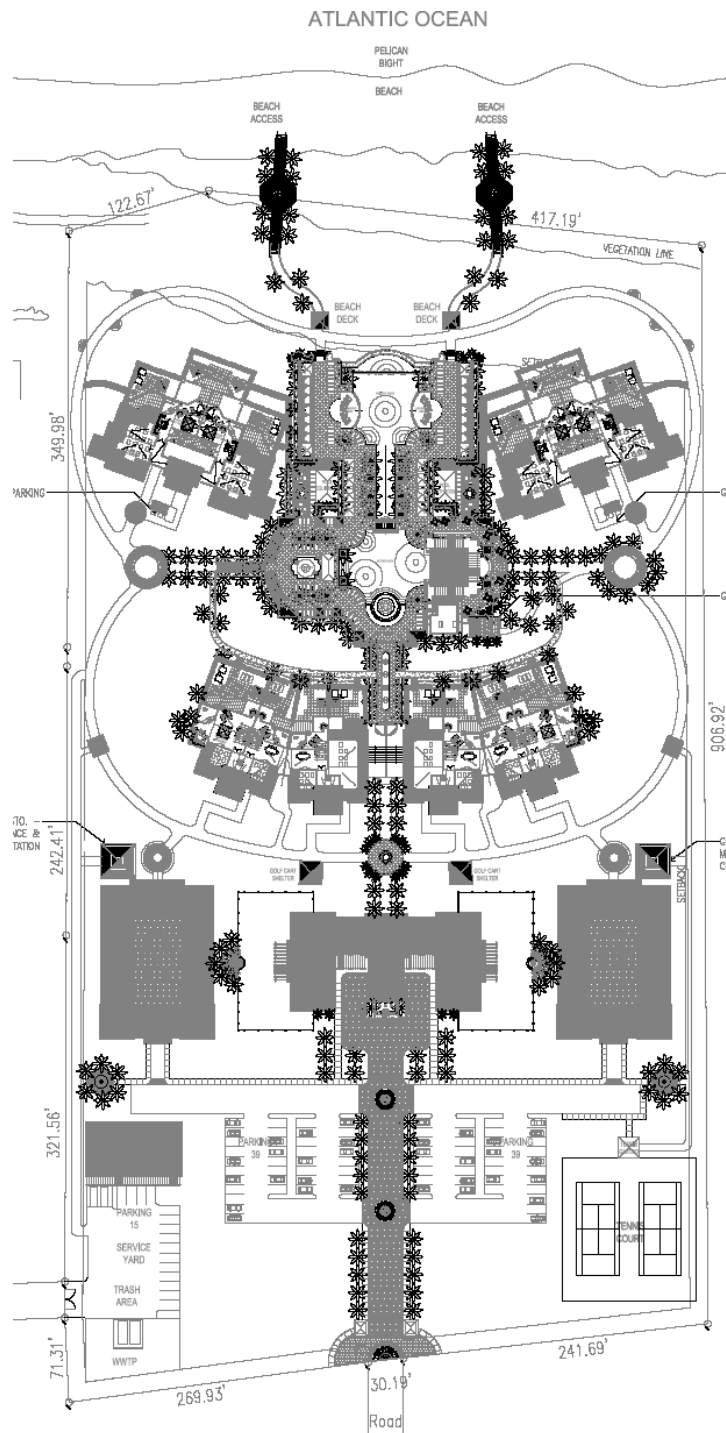
<u>Client/Project Value</u>		<u>Projects</u>	<u>Year</u>
John Redmond & Associates	US\$50M	WATER COLOURS , Cayman Islands Complete MEP design for (six storey) condo development.	2009 - 2010
Grace Bay Club Resorts	US\$50M	CAYA at Grace Bay , Providenciales Complete MEP design for - 6 N° condo/hotel style blocks - townhouses - Commercial buildings	2008
The O Property Collection	US\$100M+	DELLIS CAY DEVELOPMENT Continued with MEP design for Phase I development.	2008
Boyken International	US\$10M+	WEST CAICOS RITZ CARLTON RESORT Complete MEP design for - Staff Housing and Cart Barn on 3 acre site - 15 Acre site and Back of House facilities - Quintess Villas - West Caicos arrival/departure site	2008
Lee & Astwood Architects	US\$10.0M	VERANDA , Grace Bay, Providenciales Complete MEP design for Reception, Laundry blg, Restaurant, Laundry facility Including site infrastructure (Note main Accommodation units were complete in 2006 Previous engineers)	2008-2009
Kaitlin Group	US\$5M	VILLA DEL MAR , Providenciales Complete MEP design for condominium development. (Phase I and Phase II)	2008
Conservative Architects	US\$15M	ST CHARLES PHASE II North Caicos, Complete MEP design	2007
CMK, Ltd.	US\$8M	SOUTH CAICOS DEVELOPMENT South Caicos, Complete MEP design for infrastructure works for Bell Sound and Peninsula site.	2007



Tanai Hotel – Lobby Plaza at Night, Northwest Point - Providenciales



Tanai Hotel -General View, Northwest Point, Providenciales



Pelican Point Resort – Masterplan, Providenciales



Dellis Cay – Aerial View of Peninsula, Turks and Caicos Islands



Dellis Cay - Over Water Villas, Turks and Caicos Islands



Dellis Cay - Beach Villa, Turks and Caicos Islands



Dellis Cay – Beach House Residence, Turks and Caicos Islands



Dellis Cay – Spa, Turks and Caicos Islands



The Vellagio (Pool area and Building 1), Grace Bay Providenciales

<u>Client/Project Value</u>		<u>Projects</u>	<u>Year</u>
James Weeks	US\$10M	THE CANTERBURY North West Point, Complete MEP design	2007
Parrot Cay Hotel	US\$1.0M	PARROT CAY/VISITOR FACILITY LEEWARD Providenciales, Complete MEP design for visitor facility.	2007
Bouygues Bâtiment International	US\$80+	THE TANAI , Providenciales North West Point, Complete MEP design	2007
Rafael Amuchastegui Design (RAD)	US\$60M+	VELLAGIO , Providenciales Grace Bay, Complete MEP design	2007
	US\$80M+	PELICAN POINT RESORT , Providenciales Complete MEP design for 136 apartments Development. Client has instructed redesign in 2009.	2006
TDMG-Concordia Ltd.	US\$2M	ROYAL REEF RESORT , North Caicos Design of fire sprinkler installation in compliance with NFPA 13	2006
Ace Plumbing Co. Ltd	US\$2M	THE REGENT GRAND , Providenciales Design of fire sprinkler installation in compliance with NFPA 13	2006
Sodalco Development	US\$1.5M	SEVEN STARS , Providenciales MEP design for waste water treatment plant facility	2006
The O Property Collection	US\$100M+	DELLIS CAY DEVELOPMENT Complete MEP design for Phase I development	2006
Leeward Ltd	US\$1M	LEEWARD MARINA CLUB , Providenciales Design of fire sprinkler installation in compliance with NFPA 13	2005
TDMG-Concordia Ltd	US\$10M+	WEST BAY CLUB , Providenciales Design of fire sprinkler installation in compliance with NFPA 13	2006
	US\$1M	TUSCANY , Providenciales Design of fire sprinkler installation in compliance with NFPA 13	2005



Gansevoort Turks & Caicos a Wymara Resort, Providenciales

<u>Client/Project Value</u>	<u>Projects</u>	<u>Year</u>
Caicos Resorts Ltd	AMANYARA RESORT & SPA , Providenciales Complete MEP design for villas	2004
	US\$15M Retained as MEP client liaison for overall development including full MEP design of Resort Spa, North West Point	2004
Conservative Architects Ltd	US\$10M ST. CHARLES , North Caicos Complete MEP design for Phase I	2004
Projeteck Limited	US\$20M GRACE BAY CLUB , Providenciales Design of fire sprinkler system in compliance with NFPA 13	2004
Coxco Construction Ltd	US\$2M AMANYARA RESORT & SPA , Providenciales Complete MEP design for Main Lodge Swimming Pool, North West Point	2004
Simon Wood Associates Ltd	US\$30M GANSEVOORT TURKS & CAICOS, a Wymara Resort , Providenciales Complete MEP design for development on Grace Bay.	2004
Peacock & Lewis Architects & Planner Inc. (USA)	US\$30M WINDSONG , Providenciales Complete MEP design for condominiums on Grace Bay	2004
The Turks and Caicos Sporting Club	THE AMBERGRIS CAY PARTNERSHIP Complete MEP design for:	2004
	US\$5M Le Grand Cottages	2004
	US\$5M Welcome Centre/Administration	2005
	US\$2M Staff Housing Phase 1	2005
	US\$5M Calico Jack Cottages	2005
	US\$5M Operation Buildings	2005
	US\$2M Columbus Cottages	2005
	US\$1M Calico Pavillion Pool	2006
	US\$2M Operation Building Phase 2	2006
	US\$3M Staff Housing Phase 2	2006
	US\$18M Members Lodge	2006
	US\$10M Columbus Beach/Le Grande Phase II	2007
	US\$12M Saltrakers	2007
	US\$20M Whale watchers	2007
	US\$2M EMS Building	2008
	US\$2M Medical Facility	2008



Calico Jack Pavillion, Ambergris Cay – Turks and Caicos Islands



Le Grande Cottages, Ambergris Cay – Turks and Caicos Islands



Two Storey Staff Housing, Ambergris Cay – Turks and Caicos Islands

(B) Commercial

<u>Client/Project Value</u>		<u>Projects</u>	<u>Year</u>
John Redmond & Associates	US\$6m	Fortis Control Building, Turks and Caicos Complete MEP design	2014
John Redmond & Associates	US\$2M	Fortis Mechanical Workshop, Salt Cay, Turks and Caicos Complete MEP design	2013
BCQS Limited	US\$6M+	SCOTIA BANK –Fairview Branch, Montego Bay, Jamaica Complete MEP design	2013
M, Aviation	US\$10M	FBO (Fixed Base Operations), Providenciales Full MEP design, including external works	2013
Leeward Ltd	US\$5M	WATER SPORTS BUILDING, Leeward Providenciales. Full MEP design	2012
	US\$5M	MARINA OPERATIONS BUILDING Leeward Providenciales. Full MEP design.	2012
John Redmond & Associates	US\$3M	Fortis Heavy Mechanical Workshop Providenciales, Complete MEP Design	2011
Digicel Group	US\$2M+	DIGICEL OFFICE, currently at 12 floors is Haiti's highest building, Port-au-Prince, Haiti. MEP report on remedial works on damaged building after January earthquake. Re-design of installed MEP installation	2011
Digicel Group	US\$1.5M	MEGASTORE for DIGICEL (Haiti), Port-au-Prince. Complete MEP design	2010
Digicel Group	US\$1.0M	IRON MARKET, Haiti MEP design (including PV installation) for Heritage building.	2010
DDL Studios	US\$2M	ONE CAYMAN HOUSE, Cayman Islands Complete MEP design	2010
John Redmond & Associates	US\$5M	PROVO POWER COMPANY (PPC) LTD. Providenciales, Complete MEP design for new Administrative Headquarters	2009
	US\$1.0M	PROVO POWER COMPANY (PPC) LTD. Providenciales, MEP design for site infrastructure requirements.	2009



Iron Market Haiti_110KWhr PV Installation (currently the largest standalone system in the Caribbean)

<u>Client/Project Value</u>		<u>Projects</u>	<u>Year</u>
BCQS Limited	US\$1M	SCOTIA BANK , Grand Turk Complete MEP design	2009
	US\$1.0M	SCOTIA BANK , Grace Bay Providenciales, Complete MEP design	2009
Bouygues Bâtiment Trinidad and Tobago Construction Company Ltd.	US\$60M	SAINT VINCENT PLACE Trinidad and Tobago, Schematic MEP design for 8 storey commercial office complex.	2009
JACA TCI	US\$2.0M	WINE CELLAR , Providenciales Complete MEP design for retail store	2008
KH Capital Ltd.	US\$3M	GRACEWAY BLG. D , Providenciales Complete MEP design for banking Centre.	2008
John Redmond & Associates	US\$1.0M	PROVO POWER COMPANY (PPC) LTD. , Providenciales, Complete MEP Design for workshop and store building.	2008
Norstar Group Ltd.	US\$3M	TURKS & CAICOS UTILITES Grand Turk, Complete MEP design of utility Company's new office headquarters	2007
J & W Construction	US\$2M	GRACEWAY BLG. C , Providenciales Complete MEP design for complex	2007
Carnival Cruise Line	US\$0.5M	FLOWRIDER FACILITY , Grand Turk	2007
Coxco Limited	US\$2M	COXCO LIMITED , Providenciales Electrical design for new office.	2007
Emerald Estates/ Emerald Enterprises	US\$5M	LA VELE PLAZA , Providenciales Complete MEP design for Phase II	2007
TCI Structures	US\$1M	AMETHYST DEVELOPMENT Providenciales, Complete MEP design	2007
	US\$20M	REGENT (Ph 4) DEVELOPMENT Providenciales, Complete MEP design	2007
	US\$1M	TURQUOISE REEF TOWN HOUSES Providenciales, HVAC design	2007

<u>Client/Project Value</u>		<u>Projects</u>	<u>Year</u>
I Group	US\$10M	MAYAGUANA AIRPORT TERMINAL , Bahamas, Complete MEP design for airport terminal building.	2007
Simon Wood & Associates	US\$1.5M	MISICK AND STANBROOK , Providenciales Complete MEP design	2007
BCQS Limited	US\$1.0M	SCOTIA BANK , Providenciales Complete MEP design for development on Grace Bay	2007
	US\$5M	SALTMILLS III , Providenciales Complete MEP design for retail/office complex	2007
RAD Limited	US\$0.5M	PROVO GOLF CLUB PRO SHOP , Providenciales, Complete MEP design	2007
Simon Wood Associates Ltd.	US\$2M	CASABLANCA , Providenciales HVAC design for commercial development for a casino, Grace Bay	2006
Engineering Design Services Ltd.	US\$5M	PLANTATION HILLS , Providenciales Complete MEP design for residential development	2006
Emerald Estates/ Emerald Enterprises	US\$5M	LA VELE PLAZA , Providenciales Complete MEP design	2006
BCQS Limited	US\$3M	SALTMILLS PHASE II , Providenciales Complete MEP design for retail/office development	2006
Simon Wood Associates Ltd.	US\$2M	PALM COURTYARD , Providenciales Complete MEP design	2006
	US\$2M	VENTURE HOUSE , Providenciales Complete MEP design for office complex	2005
OBM Ltd	US\$10M	CARNIVAL CRUISE LINE TERMINAL , Grand Turk Complete MEP design for site infrastructure for Phase I development.	2005
Simon Wood Associates Ltd.	US\$4M	KPMG OFFICES , Providenciales Complete MEP design	2005



Carnival Cruise Line Terminal, Grand Turk – Turks and Caicos Islands

(C) Government / Public Sector

<u>Client/Project Value</u>		<u>Projects</u>	<u>Year</u>
Bouygues Batiment	US\$25M	POLICE STATIONS , Trinidad & Tobago	2010-2011
Trinidad & Tobago		MEP shop drawings for main contractor	
Construction Company Ltd.			
Bouygues Batiment	US\$25M	POLICE STATIONS ,	2009 -2010
Trinidad & Tobago		Complete MEP design for 8# Police	
Construction Company Ltd.		stations located throughout Trinidad	
		and Tobago.	
ACE Plumbing	US\$1.6M	CARIFTA STADIUM , Providenciales	2007
		Design of plumbing system	
Department of Engineering	US\$5M	DISASTER MANAGEMENT CENTRE	2007
Services		Grand Turk, Complete MEP design	
(Public Works Department)			
TCI Structures	US\$1.0M	TC INVEST , Providenciales	2007
(Regent Village Government		Complete MEP design for	
Office)		government office.	
OBM International	US\$3M	TCU GRAND TURK , Grand Turk	2007
		Complete MEP design	
Johnston International Ltd.	US\$4M	PUBLIC AUDITORIUM , Providenciales	2005
		Complete MEP design for indoor	
		sports facilities.	
	US\$5M	PUBLIC BALLPARK , Providenciales	2004
		Complete MEP design for external facilities	
		for ballpark and Changing Room	
		facilities.	
	US\$15M	GOVERNMENT OFFICES , Providenciales	2004
		Complete MEP design	
		(Design contract Put "on hold" as per client instruction.)	



Maloney Police Station – Trinidad

(D) Healthcare

<u>Client/Project Value</u>		<u>Projects</u>	<u>Year</u>
DDL Studios	US\$5M	GEORGE TOWN HOSPITAL , Grand Cayman Expansion to include new MRI facility.	2012
Newco Structures Inc.	US\$5M	ST. LUCS HOSIPTIAL , Port-au Prince Haiti. Full MEP design	2012

(E) Private Residences

Retained by Architects and Clients for complete MEP design on a various number of high-end private residences throughout the Turks and Caicos Islands. Project values in range of \$1M-\$20M



Long Bay (Private Residence) – Providenciales



Private Residence, Long Bay – Providenciales

(F) Charitable Work

<u>Client/Project Value</u>		<u>Projects</u>	<u>Year</u>
Conservative Architects	US\$3M	TCAAF YOUTH CENTRE , Providenciales Complete MEP design	2007
Public Works Department	US\$5M	NATIONAL DRUG UNIT , Providenciales Complete MEP design	2007
Conservative Associates Ltd	US\$15M	EDUCATION COLLEGE , Providenciales Complete MEP design for Community College	2004

4.0 Professional Indemnity Insurance

The practice is insured through the Professional Indemnity Division, HSBC Insurance Brokers Limited, Bishops Court, 27-33 Artillery Lane, London, E1 7LP.

5.0 IT Resources

Our IT resources consist of a main server that is connected to each design workstation, meaning that all engineers have access to all files on system.

Engineering drawings are produced by using AutoCAD version 2014. Cooling load (HVAC) calculations are produced using Carrier's E20ii software. Large drawing files are interchanged with clients/architects using FTP software programs.

Microsoft Office 2013, with Word and Excel is available to all members of staff. Our office accountancy is administered through QuickBooks.